

Lintel Desk in Concrete

With a strikingly minimal form to reflect the architectural quality of the material, the **Lintel** modular reception desk exemplifies the linear rigour of the Concrete range. A truly modular solution for public and reception spaces, **Lintel**'s look is defined by clean lines and right angles.

Key features

Easy to specify modular components

Three height options of 760mm, 950mm and 1100mm as standard

Recessed branding, LED skirting, sign-in platform and storage units available as options

Reception desks can be handed to the left or right

CAD and BIM files available

DDA modules available

Cable management included as standard

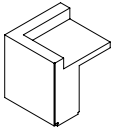
Made in lightweight, stain-resistant concrete

Choose light, mid or dark concrete with a smooth or raw finish

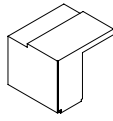
Available in 10-12 weeks (UK), 14-16 weeks (US)



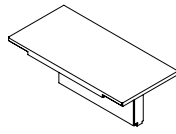
Lintel Desk in Concrete Modules



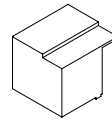
LD01
Left End
W800
D875
H760/950/1100 mm



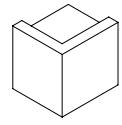
LD02
Left DDA
W800
D875
H760 mm



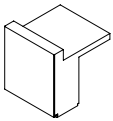
LD03
Straight DDA
W1220
D875
H760 mm



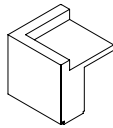
LD04
Right DDA
W800
D875
H760 mm



LD05
Right End
W800
D875
H760/950/1100 mm



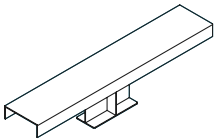
LD06
Straight
W800
D875
H760/950/1100 mm



LD07
Angle 90
W875
D875
H760/950/1100 mm

Dimensions relate to the footprint of the product at:
760mm height = no upstand
950mm height = 190mm upstand
1100mm height = 340mm upstand

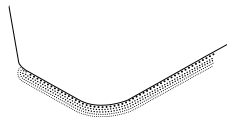
Accessories



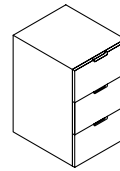
SP
Sign-in platform
Hot rolled steel
W1600
D300
H350 mm



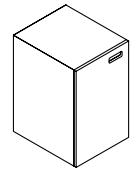
RB
Recessed branding
W700
H200 mm
(recommended dimensions)



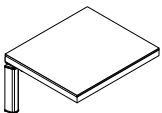
LS
LED skirting



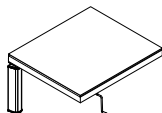
DU
Drawer unit
W400
D250/525
H700 mm



CU
Cupboard unit
W400
D250/525
H700 mm



Electric sit-stand desk
H650-950
D600-3000 mm



Manual sit-stand desk
H650-950
D600-3000 mm



Infrared heating panel

Illustrations above relate to the product at 950mm height.



Lintel Desk in Concrete Configurations



Configuration 1

W1600
D875
H760/950/1100 mm



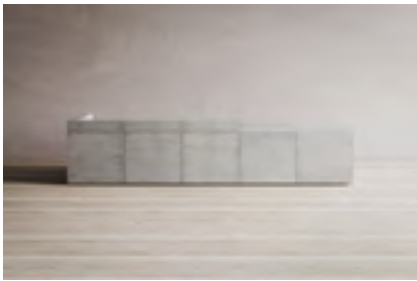
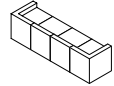
Configuration 2

W2400
D875
H760/950/1100 mm



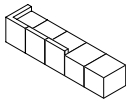
Configuration 3

W3200
D875
H760/950/1100 mm



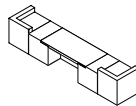
Configuration 4

W4000
D875
H760/950/1100 mm



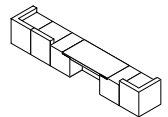
Configuration 5

W4420
D875
H760/950/1100 mm



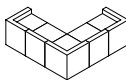
Configuration 6

W5220
D875
H760/950/1100 mm



Configuration 7

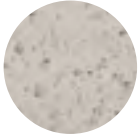
W2475/2475
D875
H760/950/1100 mm



Illustrations above relate to the product at 950mm height.

Lintel Palette Curation

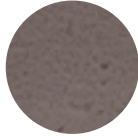
Concrete Colour Palette



Light Grey
C001



Mid Grey
C002



Dark Grey
C003